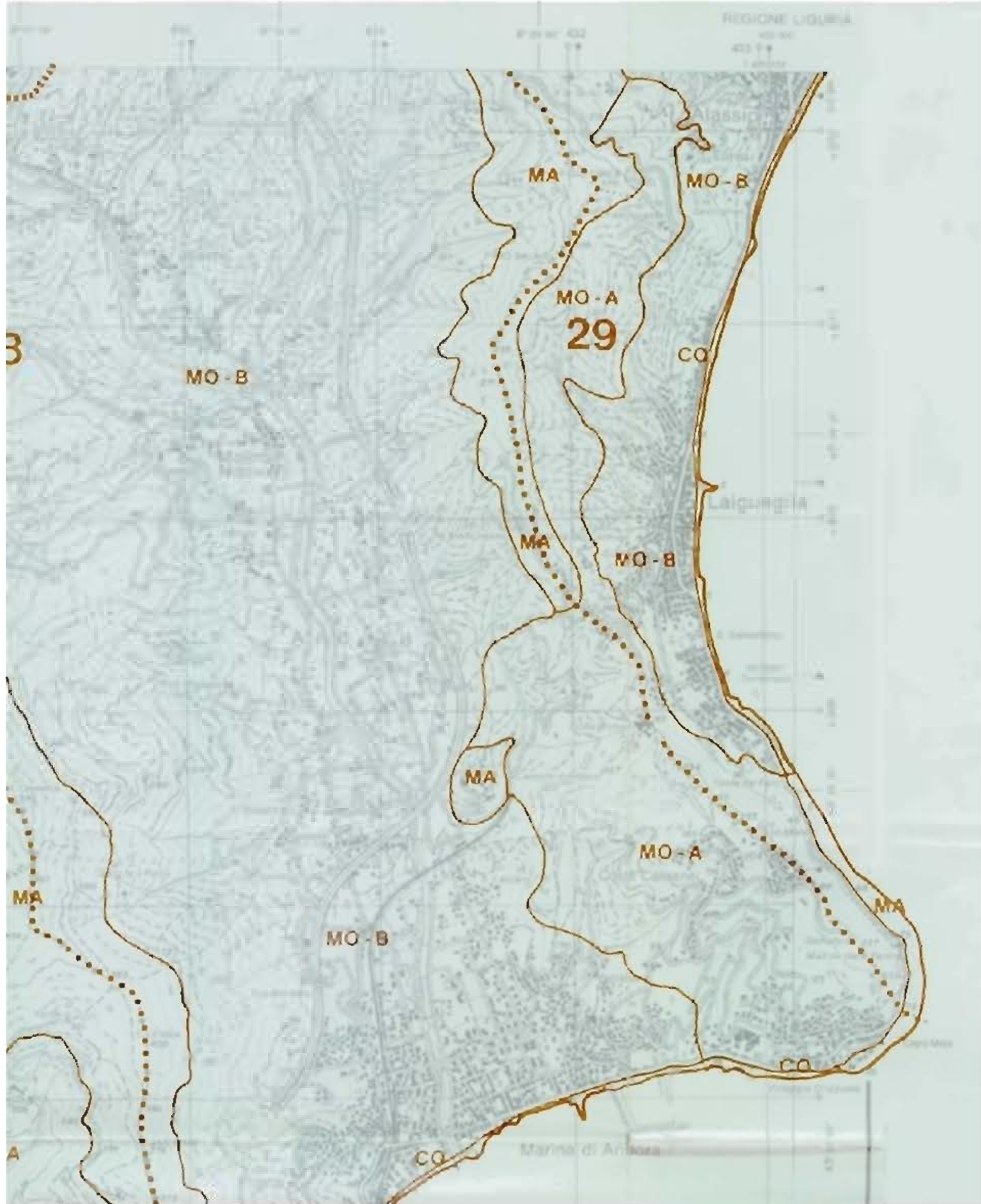
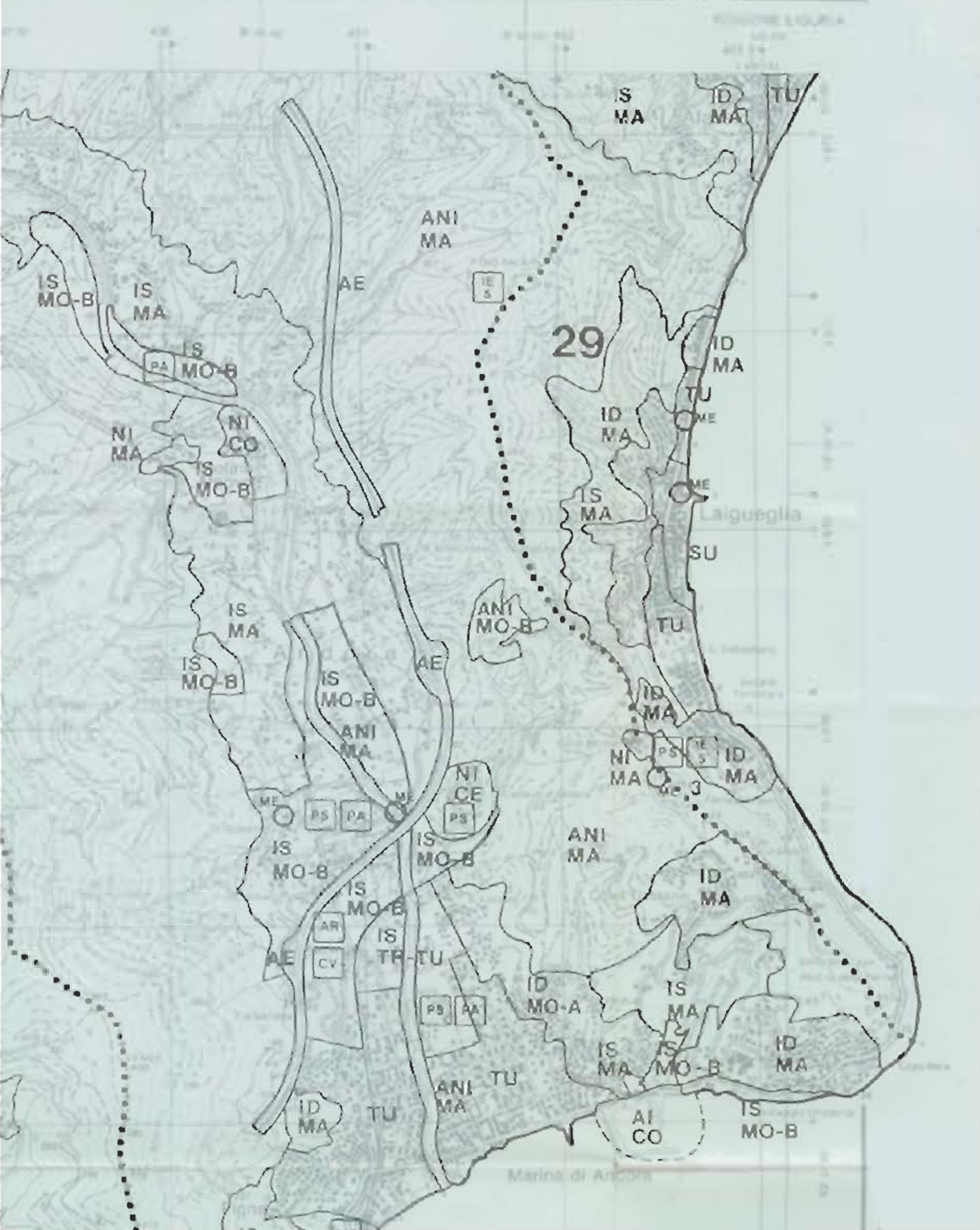
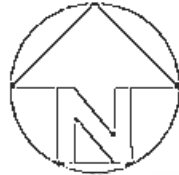


ASSETTO GEOMORFOLOGICO



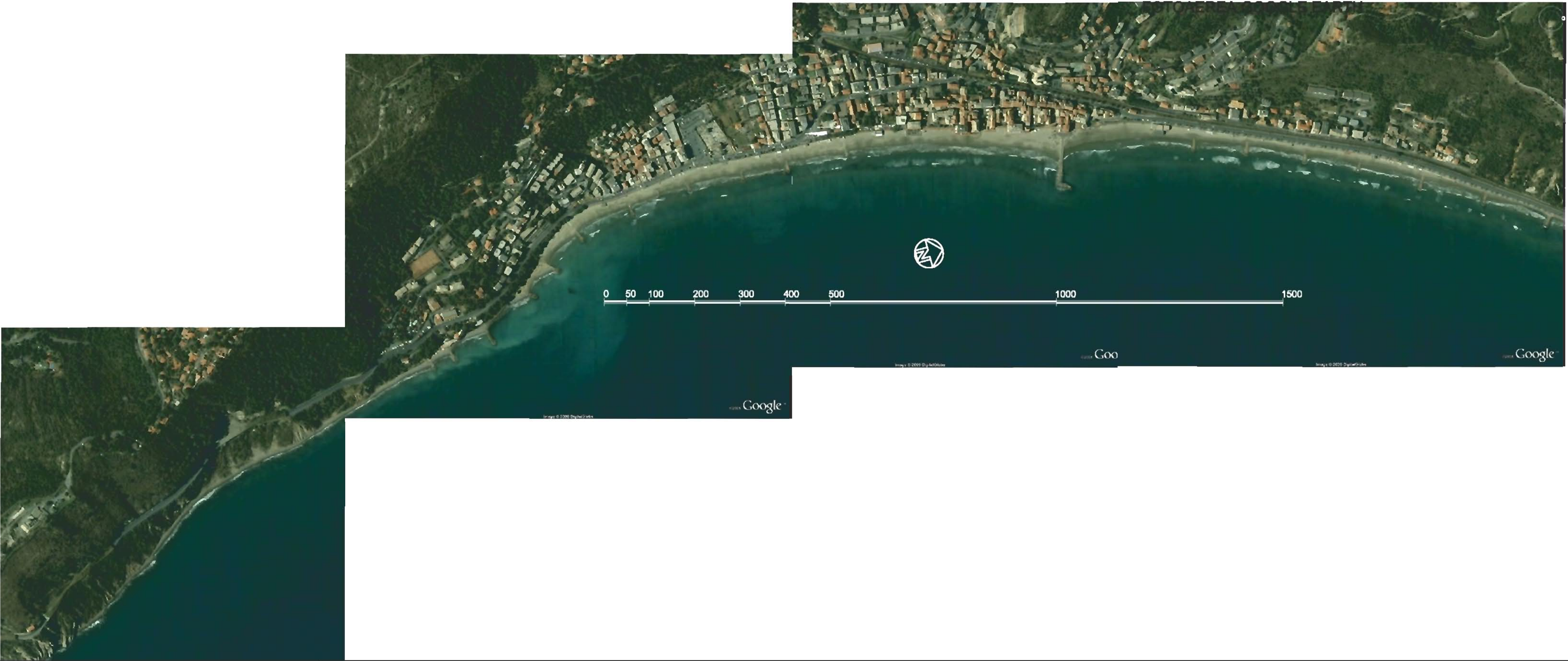
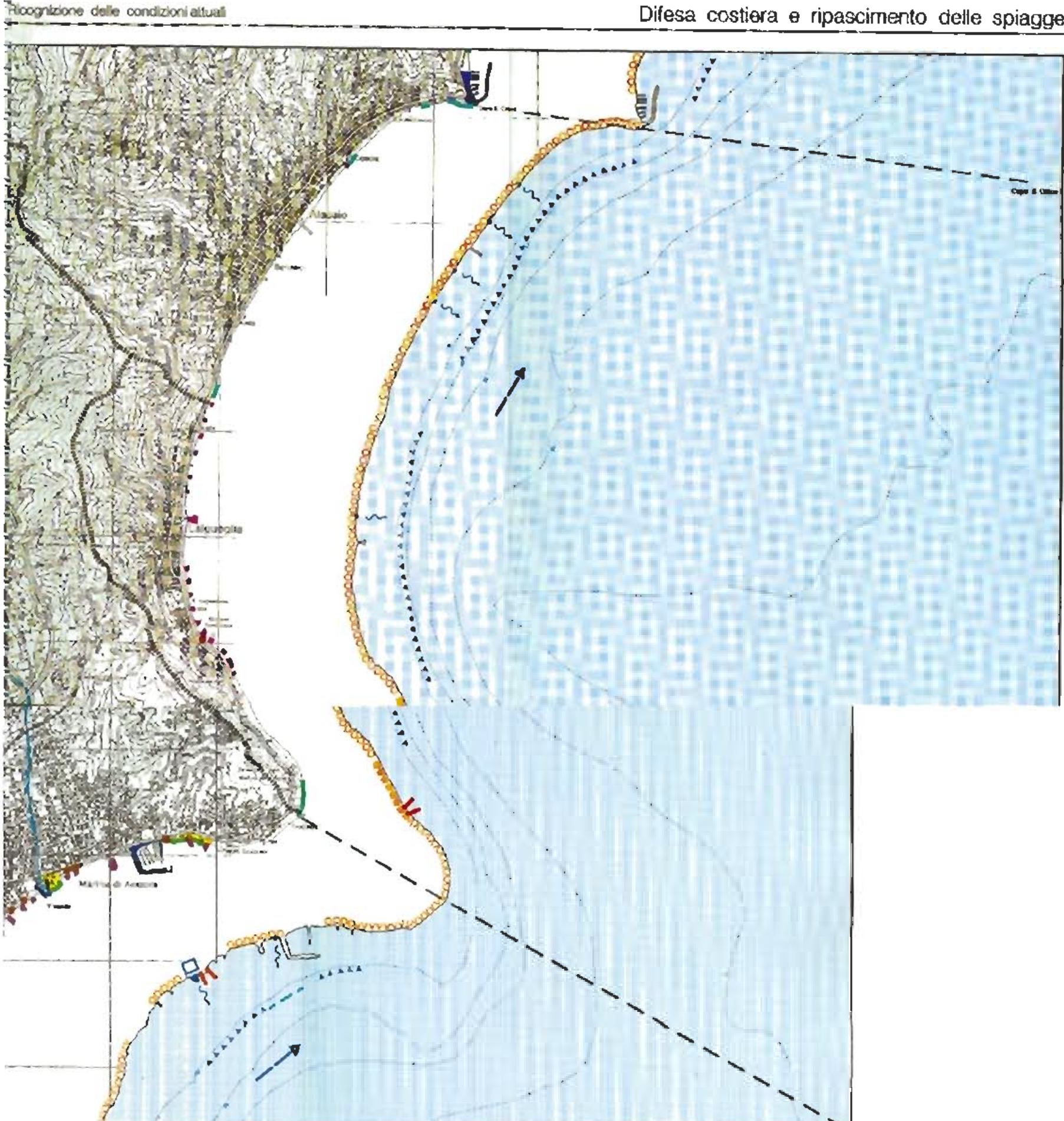
ASSETTO INSEDIATIVO



ASSETTO VEGETAZIONALE



STRALCIO DEL PIANO DELLA COSTA



AGGIORNAMENTO	APRILE 2009
VERSIONE DEFINITIVA	MARZO 2009

<div>STUDIOGAGGERO</div> <div>SAVONA Va P.a. 130R</div> <div>Tel 019 829463 Fax 019 8386702 Cell 335/303133</div> <div>Email <a href="mailto:ing.gaggero@libero.it">ing.gaggero@libero.it</a></div>		
TAV. 1	COMUNE DI LAIGUEGLIA	
	PROGETTO DI UTILIZZO COMUNALE DELLE AREE DEMANIALI MARITTIME	
SCALA VARIE		
	INQUADRAMENTO CARTOGRAFICO	
NP 1579	Gennaio 2009	Dott. Ing. Paolo GAGGERO